

Operator's manual



**Salt and Sand Spreader
City Ranger 2260/2250**

Introduction

Dear Customer,

Congratulations with your new Egholm product

The City Ranger 2260/2250 is a Danish designed and manufactured product, which offers a very flexible way of maintaining outdoor areas.

Optimal use of your City Ranger 2260/2250 salt and sand spreader

To ensure optimal performance of your City Ranger 2260/2250 salt and sand spreader, please read this manual carefully before using the machine. Failure to do so can result in personal injury and damage to the machine.

Safety

The salt and sand spreader is equipped with various devices to ensure optimal operational safety, both for the user and the surroundings. We ask you to pay particular attention to section 1.1 Safety. The machine must only be serviced by professionals.

The salt and sand spreader is designed only for use by professionals. On delivery, the user will receive thorough training to become a competent operator.

Do not lend the machine to anyone who has not been thoroughly trained and has not read this manual carefully.

The operator's manual should be considered as a permanent part of the machine and must remain with it if the machine is sold.

Warnings

Some items in this operator's manual are marked with this warning symbol.

The warning indicates areas where extra care has to be taken to avoid personal injury or damage to the machine and its accessories. The warning also shows what you should pay special attention to.



Reservations

As it is the Egholm policy to make continuous improvements, we reserve the right to alter the machine's specifications and equipment at any time without notice. Egholm accepts no liability for errors or omissions in the operator's manual.

Contact us

Should you have questions of any kind regarding your Egholm product, do not hesitate to contact Egholm.

Best regards

Egholm A/S · Transportvej 27 · DK-7620 Lemvig

T. +45 97 81 12 05 · F. +45 97 81 12 10

e-mail: info@egholm.dk · www.egholm.eu

General information	5
1.1 Safety	5
1.2 EC Declaration of Conformity for Machinery	7
1.3 Technical data	8
Operator's manual	10
2.1 Assembling the frame	10
2.2 Assembly/Disassembly	10
2.3 Start-up	12
2.4 Adjusting the spread quantity and width	12
2.5 Application	13
Service and maintenance	15
3.1 Cleaning	15
3.2 Maintenance	16
3.3 Daily maintenance	16
Conditions	18
4.1 Warranty	18
4.2 Complaints	19
4.3 Disposal	19
Wearing parts	21
5.1 Wearing parts - City Ranger 2260/2250 salt and sand spreader	21
Notes	23

The Egholm salt and sand spreader is a sturdy machine that keeps slippery paths out of your way!

The salt and sand spreader is made of robust components. The spreader plate is extremely hard wearing and can handle salt, sand and gravel of 8 mm.

The salt and sand spreader is designed so that every part that is in contact with the material being spread is made of stainless steel, glass fibre or durable plastic.

The salt and sand spreader ensures precise and uniform spreading – and even thawing of the ground, for example cycle paths, pavements or parking areas. It is manually set, depending on weather conditions and driving speed, spreading only the sand and salt that is needed.

The spread width can be adjusted from 1–5 m. An optional cover to stop material from getting wet is available.

The salt and sand spreader is supplied with a specially-developed frame that makes it very easy for one person to fit or remove the attachment.

The salt and sand spreader can easily be combined with the dozer blade, snow blower and snow sweeper. The City Ranger 2260/2250 clears snow while simultaneously leaving a safe and passable path behind.

Useful tips

Make sure the snap couplings are clean before attaching, as this protects the hydraulic system.

Daily cleaning and maintenance will extend the lifetime of both the machine and the attachment.

General information

**Honest
Machines**

General information

1.1 Safety

Make sure no one is standing close to the machine:

Make sure that no one is near the machine while it is in use as there is a danger of crushing.



N.B

As it is articulated, the rear end of the machine swings out when turning. Make sure that no one is standing near the machine while it is in use. (Picture 1)



Make sure the salt and sand spreader is secure

Check the salt and sand spreader is firmly secured to the machine. (Picture 2)



Avoid accidents at the rear of the salt and sand spreader

Keep fingers and feet well away from the rotating spreader plate. (Picture 3)



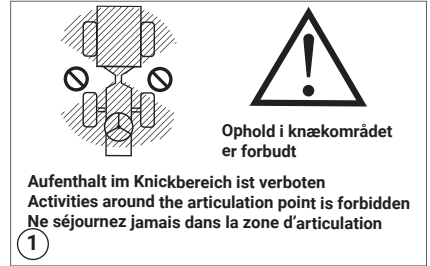
Keep clear of the salt and sand spreader

Make sure there is no one close to the salt and sand spreader when it is in use.

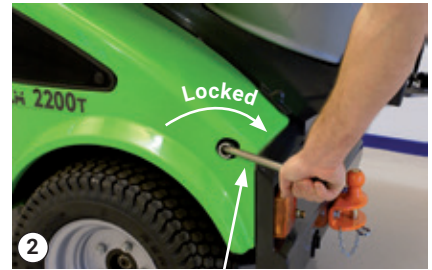


Avoid roll-overs

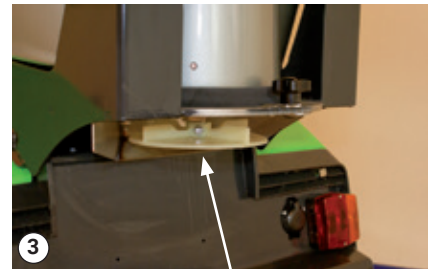
Do not drive the machine in a place where it can slide, tip or roll. Do not drive on slopes with an incline of more than 10°. (Picture 4)



Prevent people from standing in the working area



Locking handle



Spreader plate



Do not drive on slopes with an incline of more than 10°

General information

1.1 Safety - continued



Risk of injury from lifting bar

Careful attention must be given when lowering the salt and sand spreader. Keep a secure hold of the lifting bar until the salt and sand spreader is resting on the machine. (Picture 1)



Safety grill

The safety grill must be fitted before the salt and sand spreader can be used. (Picture 2)



Loading salt and grit

Do not fill the container all the way to the rim.



Salt and sand spreader being lowered onto the machine



Safety grill

General information

1.2 EC Declaration of Conformity for Machinery

Manufacturer: **Egholm A/S**
Address: **Transportvej 27 · DK-7620 Lemvig**
Telephone: **(+45) 97 81 12 05**

hereby declares that

The machine: **Salt and sand spreader 2260/2250**
Type: **22SG**

· has been manufactured in conformity with the provisions of the Machinery Directive, 2006/42/EU

Any alteration, rebuilding or addition of implements, accessories or other equipment not manufactured by Egholm automatically results in the cancellation of type approval, CE approval, any other approval, as well as any warranty on machine and attachments.

Unless otherwise agreed in writing between the operator, customer and Egholm, Egholm is the data originator (data originator) of all data generated by the machine and attachments during use.

Place: Lemvig
Date: _____
Signature: 
Knud Olsen, Senior Engineer

General information

1.3 Technical data

Dimensions

	Assembled:	Storage dimensions:
Length (L)	2,690 mm	1,250 mm
Width (W)	1,070 mm	880 mm
Height with cab (H)	1,960 mm	

Weight	70 kg
Frame weight	31 kg

Tank volume	240 L
Spread width	1 - 5 m
Loading height	1,290 mm

Technical data:

Type	22 SG
------	-------

N.B:

Specifications may be changed without prior notice.

Spreading material must have a radius of 8 mm. Material that is larger can become stuck and may damage the salt and sand spreader.

More wear and tear must be expected when spreading gravel rather than salt and sand.

Extra equipment:

09723170 Cover

Operator's manual

**Honest
Machines**

Operator's manual

2.1 Assembling the frame

Assemble the frame using the two supplied bolts. It is now ready for use. (Picture 1)

2.2 Assembly/Disassembly

Fitting the salt and sand spreader

1. Back the machine up to the salt and sand spreader mounted on the frame. (Picture 1)

2. Stop the machine.

3. Check that the locking handle is in the unlocked position. The hooks must be positioned as shown in the picture. (Picture 2)

4. Check that the hydraulic couplings are clean and dirt-free. If not, clean with a dry cloth. (Picture 3)

5. Push the salt and sand spreader in over the carrier console. (Picture 4)
The salt and sand spreader must be lined up with the centre of the machine.

The salt and sand spreader must be empty before being fitted or removed.



2 bolts on the tank frame



Locking lever – unlocked



Cleaning the couplings



Mounting the salt and sand spreader

2.2 Assembly/Disassembly - continued

6. Press the lifting bar down, push the locking ratchet to free the lifting bar from the catch and lower the salt and sand spreader down onto the machine. (Picture 1)

7. Check the salt and sand spreader is firmly secured to the machine. (Picture 2)

8. Release the frame from the salt and sand spreader.

9. Push the locking handle grip in and turn anti-clockwise and then pull the locking handle out and swing it up. (Picture 2)

10. Attach the salt and sand spreader securely to the machine by turning the locking handle clockwise 1/3 of the way around. (Picture 3)

11. Push the locking handle in and turn it clockwise.

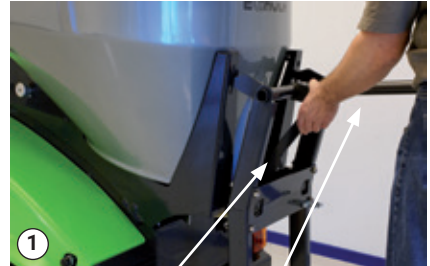


Warning!

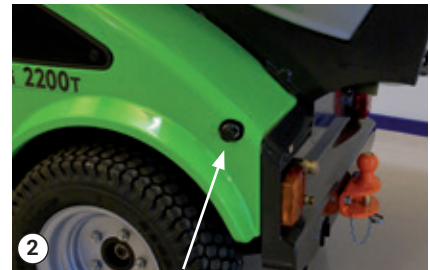
Avoid crushing fingers and keep a secure hold on the locking handle when the salt and sand spreader is being lowered.

Removing the salt and sand spreader

Follow the procedure for fitting in reverse order.



Locking handle grip Lifting bar



Pull out locking handle



Turn locking handle

Operator's manual

2.3 Start-up

1. Start the machine.
2. Start the salt and sand spreader by activating PTO-rear. (Picture 1)



Warning!

Make sure no one is standing close to the machine when it is in use.



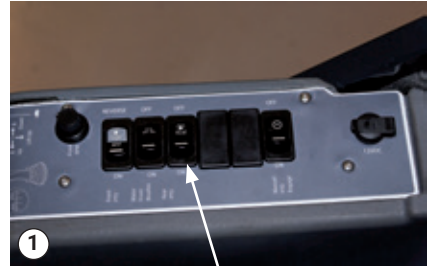
N.B!

When turning, the rear of the machine swings out, so there is a risk of crushing or collision.

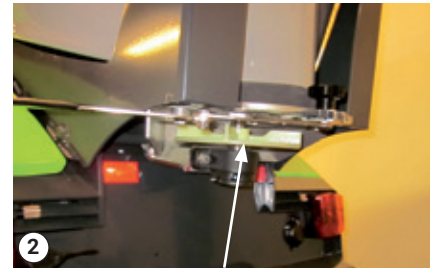


Avoid accidents at the rear of the salt and sand spreader

Keep fingers and feet well away from the rotating spreader plate. (Picture 2)



PTO-rear



Spreader plate

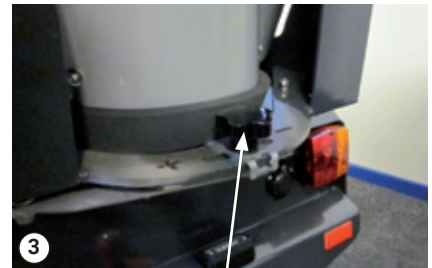
2.4 Adjusting the spread quantity and width

Spread amount

The spread quantity can be adjusted at the rear of the salt and sand spreader.

Turn handle. (Picture 3)

- a. Turn the feed plate clockwise to reduce the supply.
- b. Turn the feed plate anti-clockwise to increase the supply.



Turn handle

Spread width

The spread width is the width at which the salt and sand spreader covers the ground. The material is spread in a semi-circular direction to ensure equal amounts of material on either side of the machine

To set clearing width and speed, turn the handle on the left-hand side of the salt and sand spreader. (Picture 1)

The handle is variably adjustable from 1 to 7, where 1 is the narrowest clearing width. (For clearing widths, see spreader table)



Adjusting the spread width



Important!

Spreading material must have a radius of 8 mm. Material that is larger can become stuck and may damage the salt and sand spreader.

When spreading gravel, it may be an advantage to detach the two upper stir arms and all the chains to avoid excess wear and tear on the tank. (Should be made at an authorised Egholm distributor).

More wear and tear must be expected when spreading gravel rather than salt and sand.

Tank frame

The tank frame must always be positioned on solid and level ground before the salt and sand spreader is fitted/disconnected. Moving the salt and sand spreader while fitted to the frame must only take place on solid and level ground.

2.5 Application

The salt and sand spreader may only be used with the City Ranger 2260/2250.

The salt and sand spreader must not be used to manure or fertilise fields, or to spread lime.

It must not be used to store corrosive materials.

Service and maintenance

**Honest
Machines**

Service and maintenance

3.1 Cleaning

Cleaning the salt and sand spreader

Daily cleaning and maintenance will extend the lifetime of both the machine and the attachment.

It is recommended that the salt and sand spreader and machine are cleaned with water immediately after use to remove salt residues and waste in the container. Avoid high-pressure cleaning of the snap couplings.

Wipe snap couplings clean with a cloth.

(Picture 1)

Remember to clean the machine thoroughly.



Clean the couplings with a cloth

Storage outside the season

When the salt and sand spreader is to be stored outside the season, the following steps are recommended:

1. Remove any loose paint and repaint any damaged areas.
2. Spray the salt and sand spreader with protective lubricant.

If the salt and sand spreader is to be stored for long periods or when the season is over, it is important to clean it to prevent rust from forming.

Service and maintenance

3.2 Maintenance

Oil spills and other liquids must be collected as quickly as possible and disposed of.

It is recommended that the attachment is located on the stand during repair and maintenance. Make sure that the stand is firmly placed on a level surface – and that the wheels are locked before starting work.

If the attachment is fitted to the machine during repair and maintenance, take the following measures before starting work:

- a. Switch off engine
- b. Disconnect battery
- c. Disconnect hydraulics

When handling the hydraulic system of the machine, gloves and eye protection are recommended.

3.3 Daily maintenance

Check wearing parts and replace if necessary.

Lubricate the bottom bearing as required.

Hydraulic motors require no maintenance.

Check that all bolts and nuts are tightened.

Check the machine for correct tyre pressure and adjust if necessary.

See the operator's manual for the City Ranger 2260/2250 basic machine for daily maintenance of the machine.

Conditions

**Honest
Machines**

Conditions

4.1 Warranty

The warranty period for the materials and manufacture of this salt and sand spreader is 12 months from the date of purchase.

In the case of errors or defects on the machine within the warranty period, Egholm will carry out the necessary repairs without charge for materials and working hours in accordance with the terms and conditions listed below.

The scope of warranty

1. The Egholm warranty is only valid on presentation of the original receipt, supplied with model description, serial number and date of purchase.
2. Regular checks, adjustments, services and technical alterations are not covered by the warranty.
3. All inquiries concerning the warranty are to be addressed to the distributor, from whom the machine was purchased.
4. This warranty does not cover faults and defects which cannot be traced back to defects in material or production errors.
5. This warranty is valid for persons who have legally acquired the machine within the warranty period.
6. In the event of failure to perform and substantiate service in accordance with the applicable instructions, Egholm reserves the right to reject any claim made within the warranty period.
7. Egholm reserves the right to make improvements and design-related alterations to the machine without being obliged to modify previously delivered models in relation hereto.

The warranty does not cover

- Wear and tear, accidents, damage to the equipment caused by operating errors, negligence, changes to the construction of the machine or use of non-Egholm spare parts or attachments.
- Machines with illegible serial numbers.
- Damage caused by force majeure such as lightning, flood, fire, war, civil disturbance, etc. or other causes over which Egholm has no control.

4.2 Complaints

All inquiries regarding the machine should be made at the distributor from whom the machine was purchased. This applies to inquiries concerning normal use, service, maintenance and spare parts, as well as to any complaints.

We wish you many years of safe and satisfied use of your machine.

Best regards
Egholm A/S

4.3 Disposal

When, in many years from now, your salt and sand spreader has reached the end of its working life, it should be disposed of in a responsible manner that conforms with relevant disposal regulations.

1. Used hydraulic oil is be disposed of at an approved waste disposal facility or site.
2. Remove all plastic and rubber parts and dispose of.
3. After the parts mentioned have been removed, the machine is ready to be handed over to one of your local approved scrap merchants.

Wearing parts

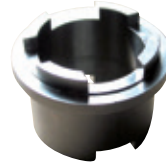
**Honest
Machines**

Wearing parts

5.1 Wearing parts - City Ranger 2260/2250 salt and sand spreader



E80600010 Complete Stirrer Set



E09923630 Lower bushing part



E09923620 Shaft



E41110100 Spreader adjusting plate



E41203520 Spreader housing



E09923610 Upper bushing part



E41203510 Base plate



E09723170 Cover



E41108300 Stirrer arm



E90501971 Stir Kit with Hub

Wearing parts

5.1 Wearing parts - City Ranger 2260/2250 salt and sand spreader



E01700030 Top bearing



E01700260 Bottom bearing



E09722680 Spreader plate

Honest Work.

Egholm A/S
Transportvej 27
7620 Lemvig, Denmark
T.: +45 97 81 12 05
www.egholm.eu - info@egholm.dk