


Instruction Sheet

Kit Number: 79210300 & 79210500

OPERATOR-CONTROLLED DISCHARGE CHUTE KIT



WARNING: FAILURE TO FOLLOW INSTRUCTIONS could result in personal injury and/or damage to unit.

Read, understand, and follow all safety practices in Operator's Manual before beginning.

PACKAGE CONTENTS

Check the contents of your kit for the parts listed below. Also see Figure 1.

Item	Description	Qty	Ariens P/N
1.	Baffle Plate Control Lever – 44, 48, 52" Decks	1	03784600
2.	Baffle Plate Control Lever – 60, 66, 72" Decks	1	03784800
3.	3/8-16" Nyloc Locking Flange Nut	14	06545500
4.	Baffle Plate Control Rod – 44, 48, 52" Decks	1	03784300
5.	Baffle Plate Control Rod – 60, 66, 72" Decks	1	03784500
6.	Compression Spring	1	08300500
7.	3/4 x 1 3/8 x 1/16" Flat Steel Washer	2	06441500
8.	Black Ball Knob	1	07533500
9.	Lever Tie Lifter Pin	1	03783000
10.	Roll Pin	1	05800200
11.	Block-off Baffle Plate – 44, 48, 52" Decks	1	03783751
	Block-off Baffle Plate – 60, 66, 72" Decks	1	03783951
12.	Baffle Lift Cam Bracket	1	03782900
13.	Plate Stabilizer Pin	2	03783100
14.	3/8-16 x 1-1/4" Hex Bolt	2	05958000
15.	3/8 x 13/16 x 1/16" Flat Steel Washer	4	06436200
16.	Sleeve Bushing	2	05508900
17.	3/8 x 3/4" Flat Nylon Washer	4	06433600

Item	Description	Qty	Ariens P/N
18.	Chute Mount Bracket – 44, 48, 52" Decks	1	03783451
	Chute Mount Bracket – 60, 66, 72" Decks	1	03783651
19.	Chute Control Master Plate	1	03782700
20.	Chute Control Backup Plate	1	03782800
21.	3/8-16 x 1 3/4" Hex Bolt	2	05958500
22.	3/8-16 x 1" Hex Bolt	1	05948700
23.	13/32 x 1" Flat Steel Washer	2	06444000
24.	3/8-16" Spinlock Flange Nut	3	06534900
25.	5/16-18" x 1 1/2 Round Head Square Neck Bolt	2	06212100
26.	5/16-18" Nyloc Flange Nut	2	06545400
27.	Discharge Chute Pin	1	03830600
28.	Chute Support Bracket – 44, 48, 52" Decks	1	03784051
	Chute Support Bracket – 60, 66, 72" Decks	1	03784251
29.	Rubber Chute – 44, 48, 52" Decks	1	03820200
	Rubber Chute – 60, 66, 72" Decks	1	03827200
30.	3/8-16 x 1 1/4" Round Head Square Neck Bolt	3	06224100
31.	3/8-16 x 1" Round Head Square Neck Bolt	2	06223600
32.	3/8 x 1 1/2" Flat Steel Washer	1	06400006
33.	1/2-13 x 1 3/4" Round Head Square Neck Bolt	1	06224800
34.	1/2 x 1" Flat Nylon Washer	2	06443300
35.	1/2-13" Top Locking Flange Nut	1	06543600
36.	1/2-13" Thin Locking Nyloc Nut	1	06535100
37.	Chute Baffle Mounting Bracket	1	04998853
38.	5/16-18 x 3/4" Hex Bolt	2	05947000
39.	5/16-18" Nyloc Locking Flange Nut	2	06545400

IMPORTANT: Items listed below used for 60, 66, and 72" decks only.

Item	Description	Qty	Ariens P/N
40.	Rod Lever Control Support Bracket	1	03783200
41.	1/4-20 x 3/4" Round Head Square Neck Bolt	2	06219900
42.	1/4-20" Locking Center Nut	2	06529700

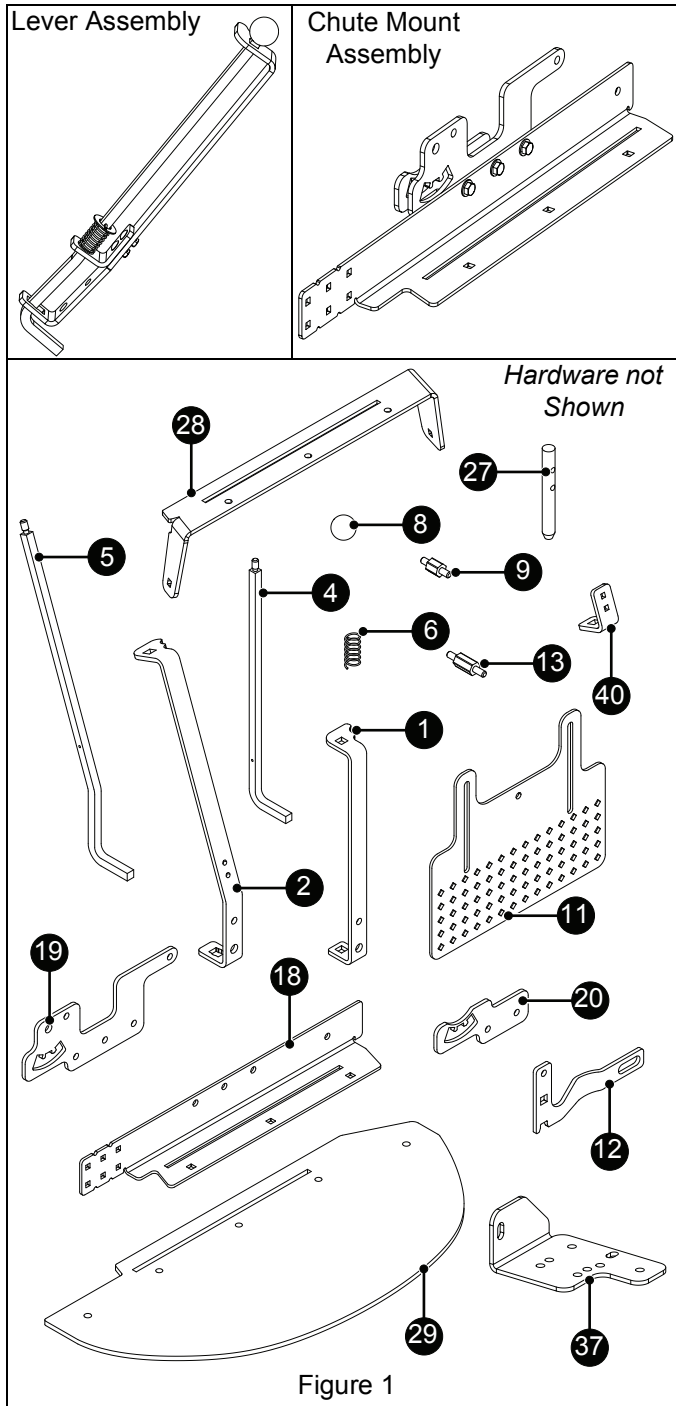


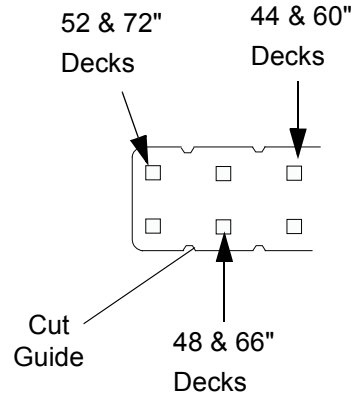
Figure 1

PROCEDURE

1. Remove original discharge chute from mower deck. Retain for future use.
2. Determine chute pin mounting location based on deck size. See Figure 2.

If preferred on smaller deck installations, excess overhang can be removed from the rear of the mounting plate. If this is done, use the notches as cutting guides. Deburr, smooth and paint any bare metal surfaces.

Serial Numbers 101 – 19999



Serial Numbers 20000 and Up

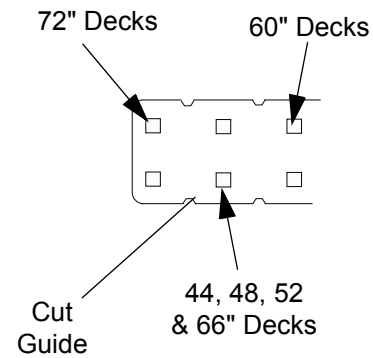


Figure 2

3. Secure discharge chute pin (item 27) to chute mount assembly with two 5/16 x 1 1/2" round head square neck bolts (item 25) and two 5/16" nyloc flange nuts (item 26). See Figure 3.

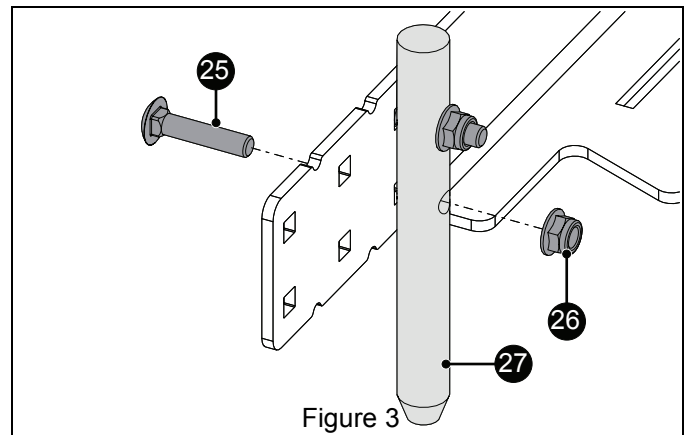


Figure 3

4. Install chute mount bracket assembly so pin inserts into deck. See Figure 4.

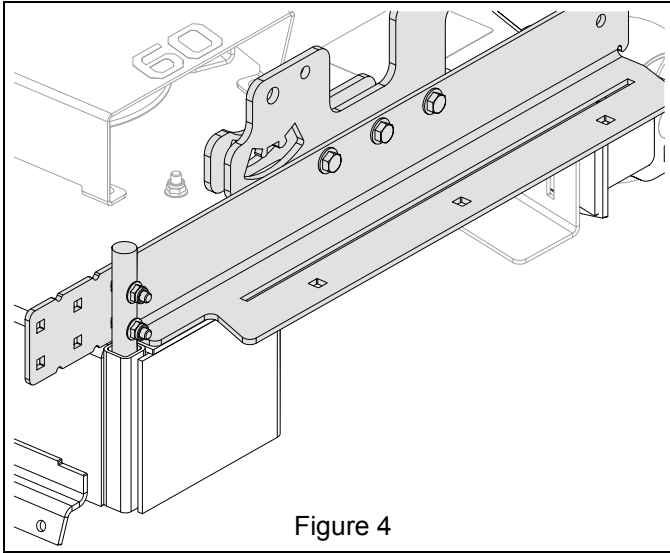


Figure 4

IMPORTANT: Steps 5 – 9 apply *only* to units with 48, 52 and 60" decks featuring flip-up discharge chutes. For installation to all other units, advance to step 11.

See Figure 5.

5. Secure chute baffle mounting bracket (item 37) to chute mount bracket assembly with one 3/8 x 1 1/4" hex bolt (item 14), one 3/8 x 1 1/2" flat steel washer (item 32) and one 3/8" nyloc locking flange nut (item 3).

IMPORTANT: Chute baffle mounting bracket **MUST** be flush against deck surface.

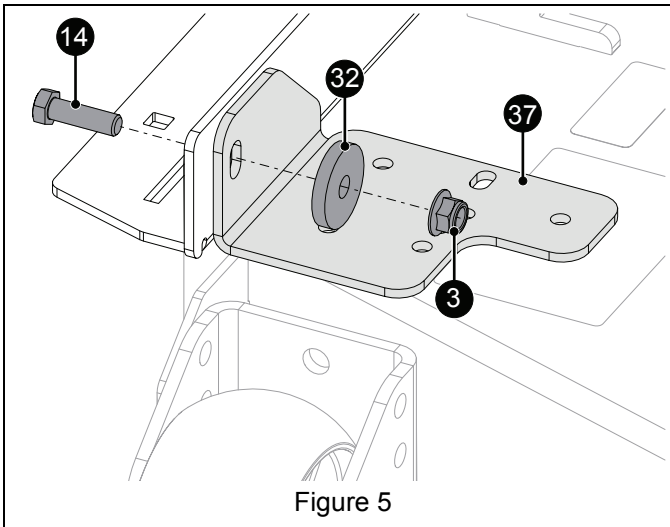


Figure 5

IMPORTANT: Not all decks are alike. Depending on size and production date, decks may or may not have two factory-cut holes through deck surface near right anti-scalp wheel.

- For installation on decks that do not have two factory-cut holes through deck surface, continue to step 6.
- For installation on decks with two factory-cut holes through deck surface, advance to step 8.

See Figure 6.

6. Use the chute baffle mounting bracket as a drill template, and with a center punch, mark two points in deck surface that align with the hole set designated for the unit's deck size.

IMPORTANT: Chute mount bracket slot **MUST** be parallel with discharge opening while marking.

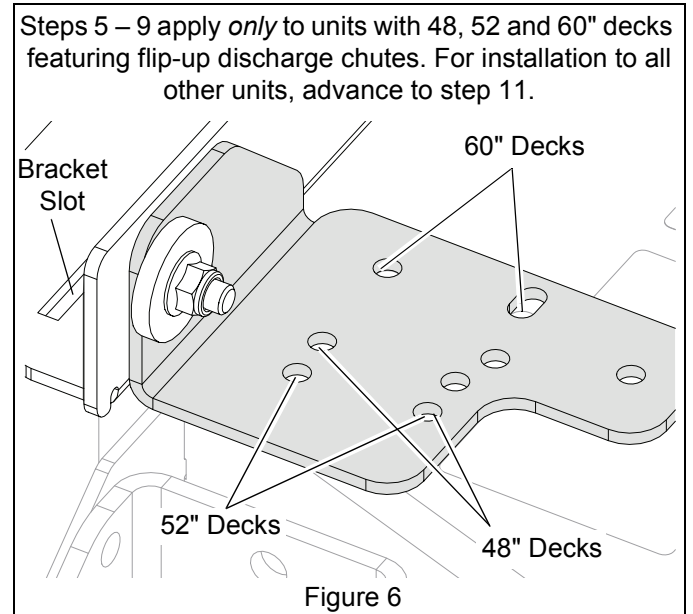
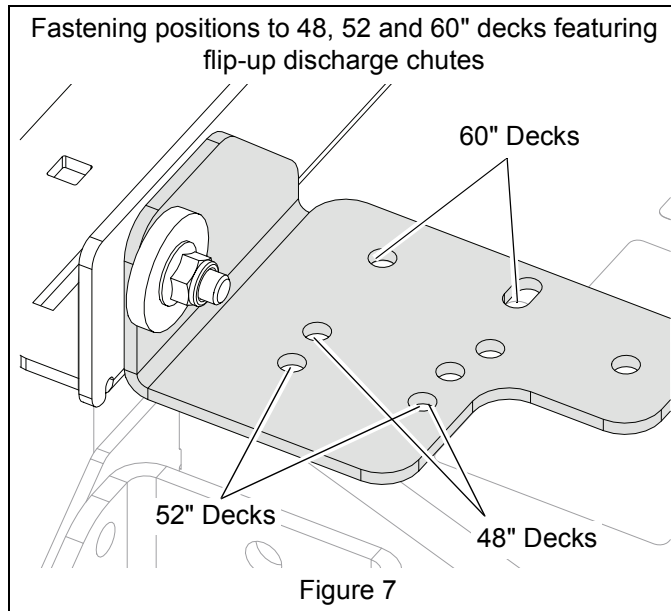


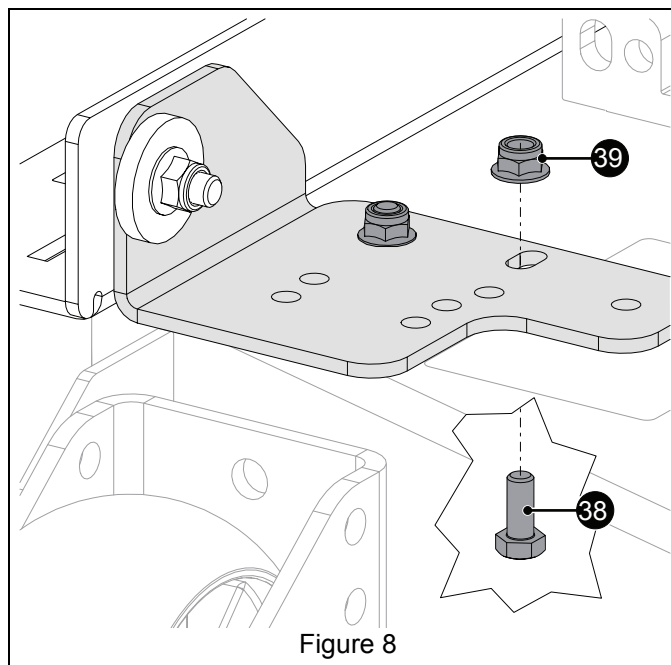
Figure 6

7. Drill two pilot holes and enlarge holes to 1 1/32" holes.

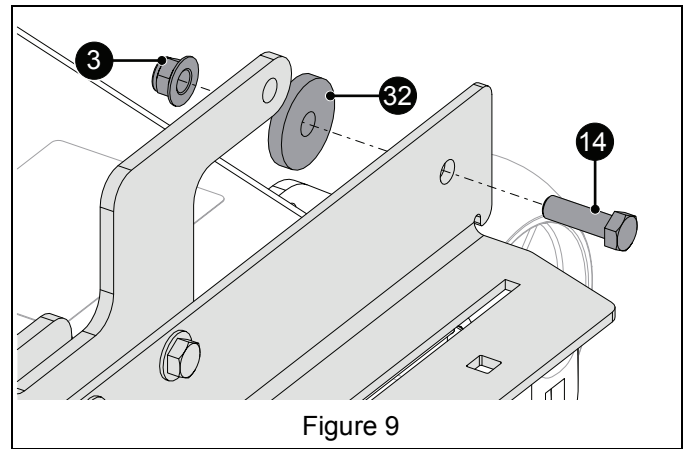
- Align deck size-designated holes in chute baffle mounting bracket with holes in deck surface. See Figure 7.



- Secure chute baffle mounting bracket to deck with two 3/4" hex bolts (item 38) and two 5/16" nyloc locking flange nuts (item 39). See Figure 8.



- Advance to step 12.
- Secure front of chute mount bracket assembly to deck with one 3/8 x 1 1/4" hex bolt (item 14), one 3/8 x 1 1/2" flat steel washer (item 32) and one 3/8" nyloc locking flange nut (item 3). See Figure 9.

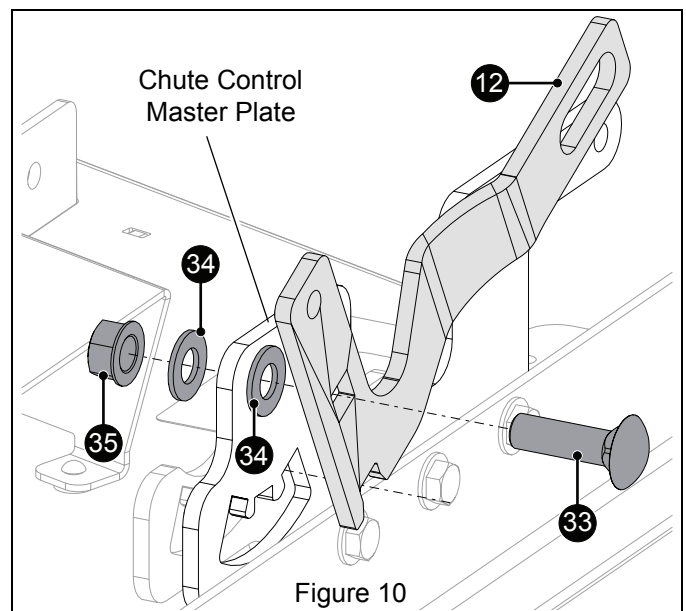


See Figure 10.

- Position one 1/2 x 1" flat nylon washer (item 34) against rear hole in chute control master plate. Position baffle lift cam bracket (item 12) against washer and insert one 1/2 x 1 3/4" round head square neck bolt (item 33) through holes.

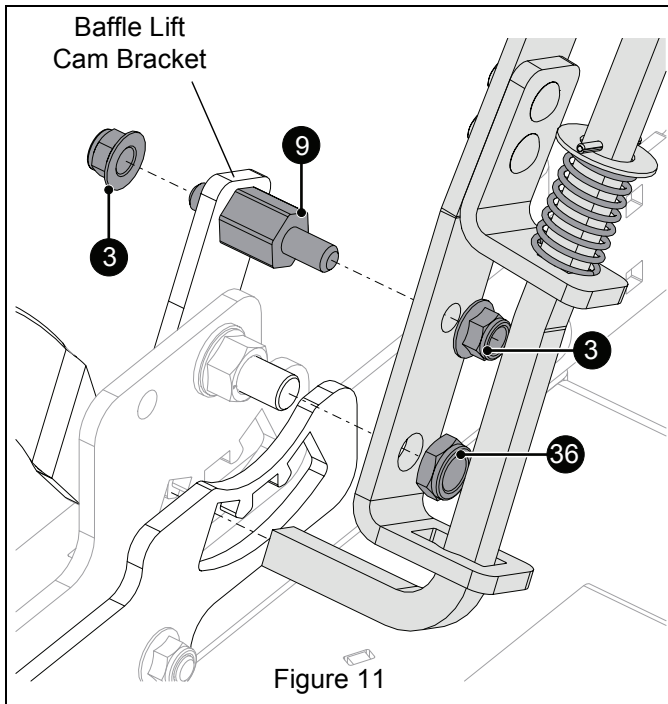
IMPORTANT: Align notch in baffle lift cam bracket with front notch in chute control master plate.

- Secure baffle lift cam bracket with one 1/2 x 1" flat nylon washer (item 34) and one 1/2" top locking flange nut (item 35).



See Figure 11.

- Secure lever tie lifter pin (item 9) to baffle lift cam bracket with one 3/8" nyloc locking flange nut (item 3).
- Install lever assembly onto chute mount assembly. Depress spring to align pin and bolt with holes on lever assembly and baffle lift cam bracket.
- Secure lever assembly with one 3/8" nyloc locking flange nut (item 3) and one 1/2" thin locking nyloc nut (item 36).

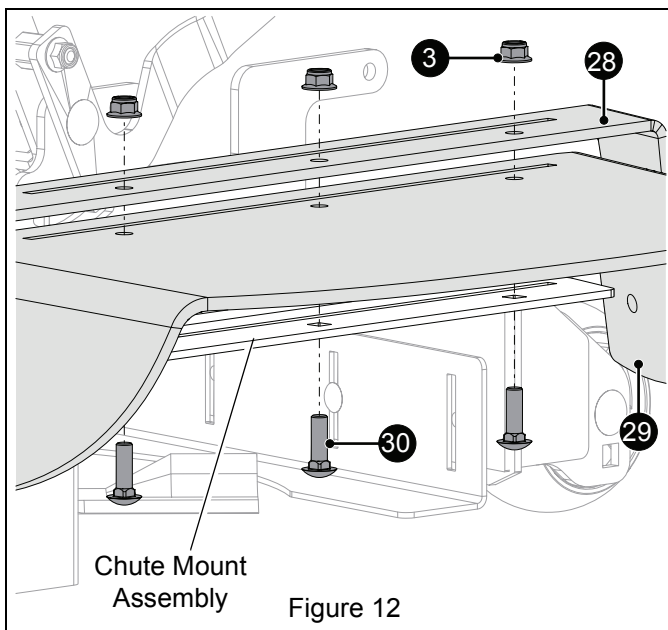


17. Depress black ball knob and operate lever. Ensure lever moves through its full travel without binding and that it locks in all three positions.

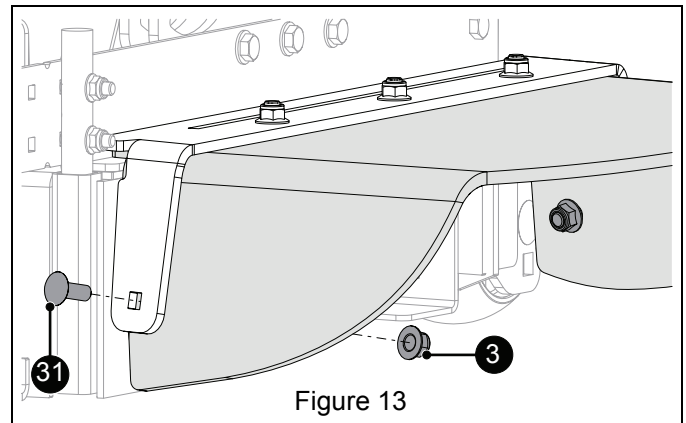
See Figure 12.

18. Align rubber chute (item 29) with chute support bracket (item 28) and secure to chute mount assembly with three 3/8 x 1 1/4" round head square neck bolts (item 30) and three 3/8" nyloc locking flange nuts (item 3).

IMPORTANT: To prevent baffle plate from binding in assembly, ensure slots in rubber chute and chute brackets are aligned before tightening hardware.



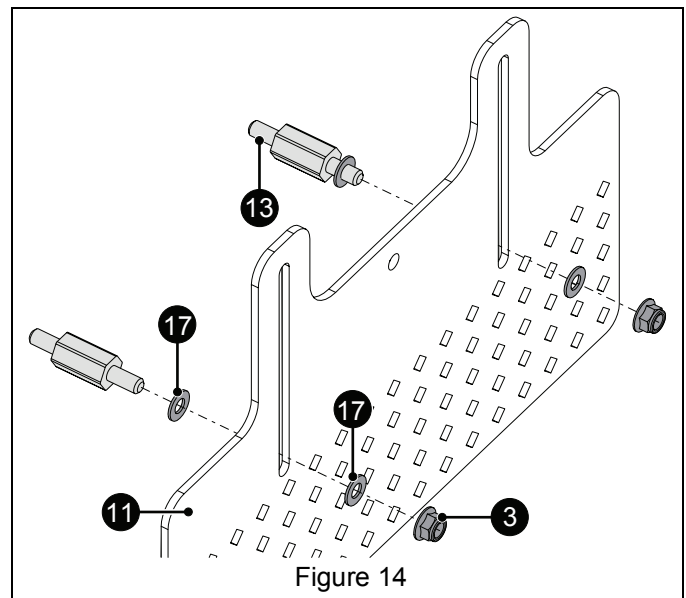
19. Secure rubber chute sides to support bracket with two 3/8 x 1" round head square neck bolts (item 31) and two 3/8" nyloc locking flange nuts (item 3). See Figure 13.



See Figure 14.

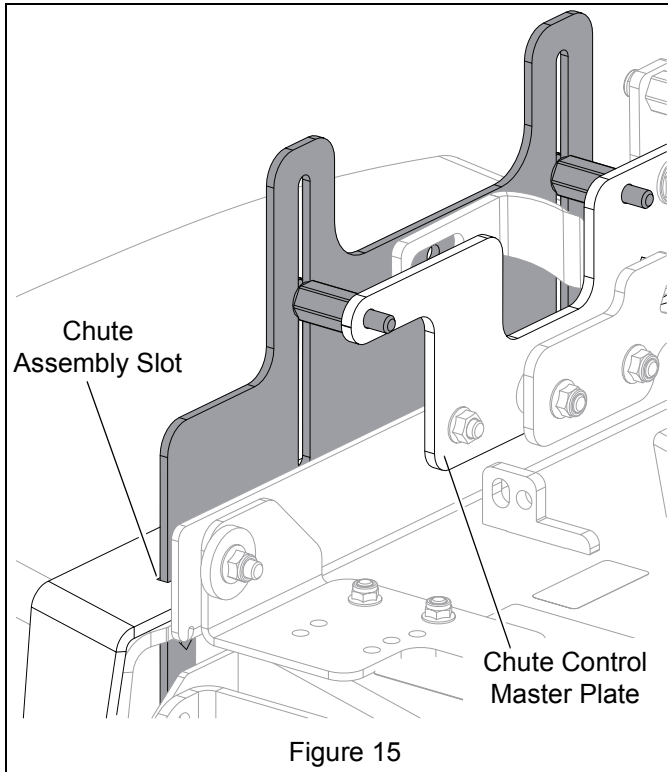
20. Install one 3/8 x 3/4" flat nylon washer (item 17) onto each plate stabilizer pin (item 13).

21. Insert pins into block-off baffle plate (item 11) slots. Secure with two 3/8 x 3/4" flat nylon washers (item 17) and two 3/8" nyloc locking flange nuts (item 3). DO NOT overtighten.



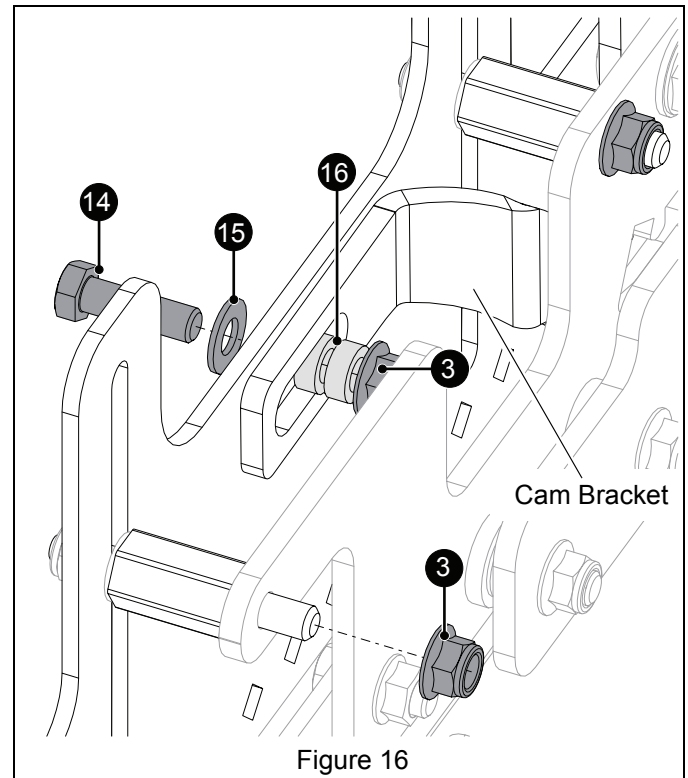
22. Place lever assembly in the middle position of travel.

23. Insert baffle plate subassembly into chute assembly slot and insert stabilizer pins through chute control master plate. See Figure 15.



See Figure 16.

24. Secure baffle to chute control master plate with two 3/8" nyloc locking flange nuts (item 3).
25. Install one 3/8 x 13/16 x 1/16 flat steel washer (item 15) onto one 3/8 x 1 1/4 hex bolt (item 14).
26. Align baffle plate hole with cam bracket slot and insert hex bolt through hole. Install two sleeve bushings (item 16) onto hex bolt and secure with one 3/8" nyloc locking flange nut (item 3).
27. Tighten hardware and then loosen nut approximately one flat (1/4 turn) to allow sleeve bushing rotation.



28. Check chute baffle operation to ensure lever securely locks baffle plate in all three positions. If lever is difficult to move, slightly loosen pivot hardware.

OPERATION

Depress black ball knob to release baffle plate lock. Operator-Controlled Discharge Chute has three positions: full block, half (top) block, and open.

IMPORTANT: Operator-Controlled Discharge Chute is designed for temporary discharge control. It is not a mulching attachment.