

# Instruction Sheet

## Kit Number: 79107900

### HD / APEX SEAT ISOLATION KIT



**WARNING: FAILURE TO FOLLOW INSTRUCTIONS** could result in personal injury and/or damage to unit.

Read, understand, and follow all safety practices in Operator's Manual before beginning.

### Package Contents

Check the contents of your kit for the parts listed below. Also see Figure 1.

| Item | Description   | Qty | Ariens P/N |
|------|---|-----|------------|
| 1    | Flange Bushing (Preassembled on item 2)                     | 2   | 05500901   |
| 2    | Isolator Mount Plate  | 1   | 05265451   |
| 3    | Fail-Safe Compression Mount (Preassembled on item 2)        | 4   | 07500237   |
| 4    | 3/8"-16 x 2" Round Head Square Neck Bolt                    | 4   | 06203200   |
| 5    | 15/32" x 2" x 1/4" Flat Steel Washer                        | 4   | 06401212   |
| 6    | 3/8"-16 Locking Center Flange Nut                           | 4   | 06534800   |
| 7    | 5/16"-18 x 5/8" Hex Bolt (Preassembled on item 2)           | 8   | 05952200   |
| 8    | 5/16"-18 Locking Center Flange Nut (Preassembled on item 2) | 8   | 06528700   |
| 9    | Seat Mount Plate  | 1   | 05133551   |
| 10   | 5/16" x 1/2" x 7/8" Flange Bushing                          | 4   | 05501127   |
| 11   | 5/16"-18 x 1 1/2" Button Socket-head Cap Screw              | 4   | 05901727   |
| 12   | 5/16" Push Nut  | 1   | 06514900   |
| 13   | Seat Fan Guard (Preassembled on item 2)                     | 1   | 05265551   |
| 14   | 3/16" Rivet (Preassembled on item 2)                        | 2   | 06800120   |
| 15   | Seat Spacer   | 2   | 05158051   |
| 16   | .05 mL Loctite 243 Threadlocker                             | 1   | 00929203   |

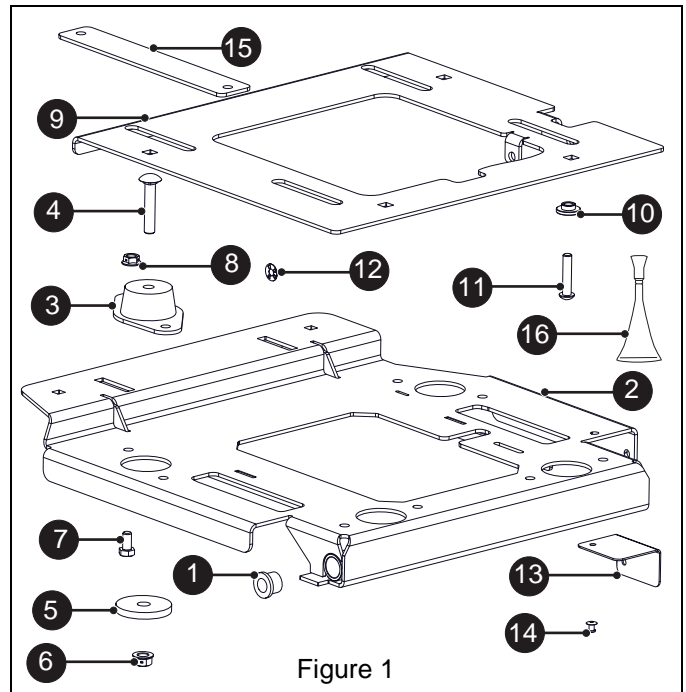


Figure 1

### REMOVAL

1. Stop engine, remove key and engage parking brake. Wait for moving parts to stop and for hot parts to cool.
2. Tilt seat forward and disconnect seat switch.
3. Remove one or two C-clip retaining seat pivot rod(s) and remove pivot rod(s) and washers. Retain all parts. See Figure 2. Remove seat assembly.

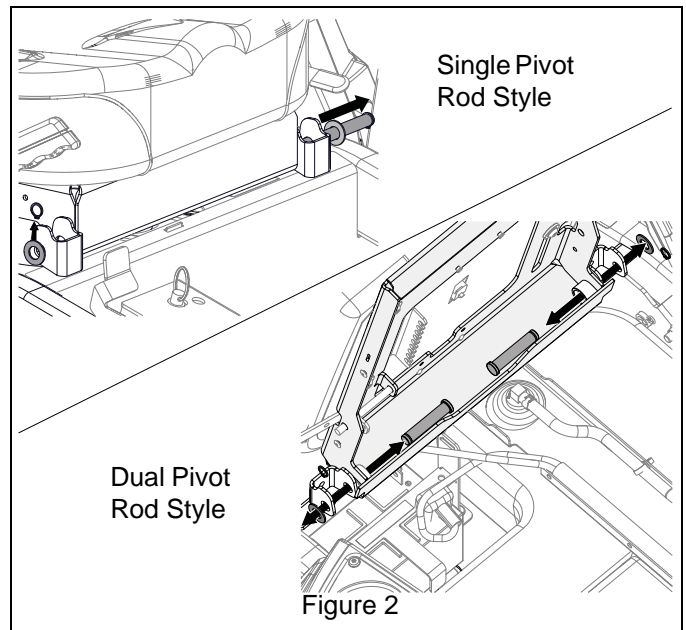


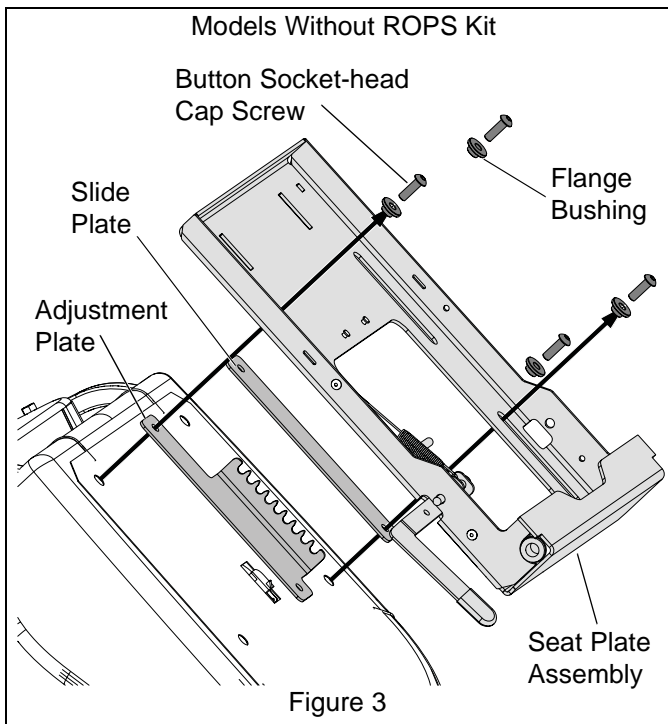
Figure 2

- Position seat with the seat plate facing upward on clean cardboard or shop towels to help prevent damage to seat material.

**Models Without Rollover Protection System (ROPS):**

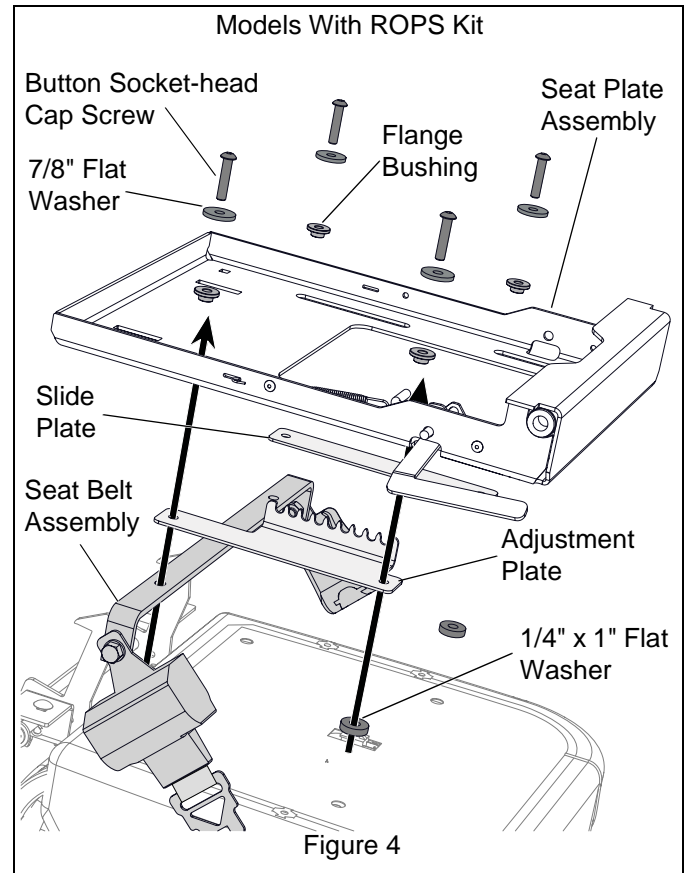
If ROPS kit is installed, skip to step 8.

- Remove four 5/16" x 1" button socket-head cap screws and four flange bushings retaining seat plate assembly. Discard socket screws and flange bushings.
- Remove and retain seat plate assembly, slide plate and adjustment plate. See Figure 3.
- Skip to step 10.



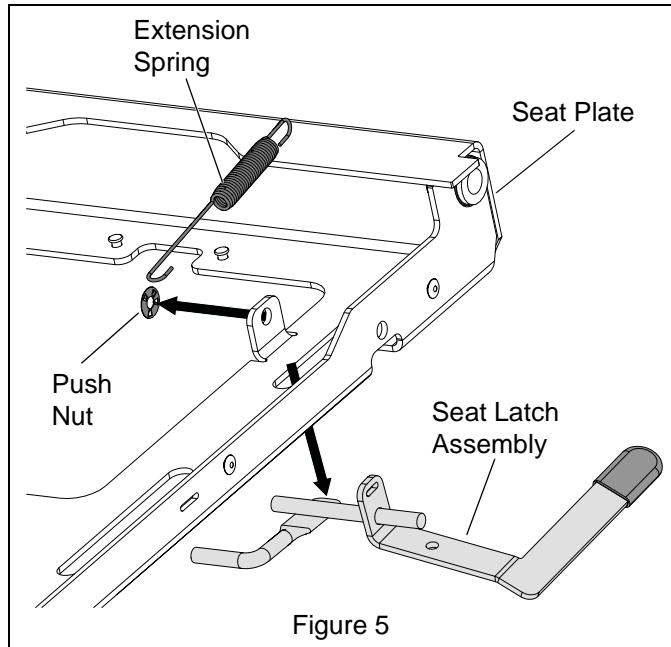
**Models With Rollover Protection System (ROPS):**

- Remove four 5/16" x 1 1/2" button socket-head cap screws, four 7/8" flat washers and four flange bushings retaining seat plate assembly. Discard socket screws and flange bushings. Retain 7/8" flat washers.
- Remove and retain seat plate assembly, slide plate, adjustment plate, 1/4" x 1" flat washers, and seat belt assembly. See Figure 4.



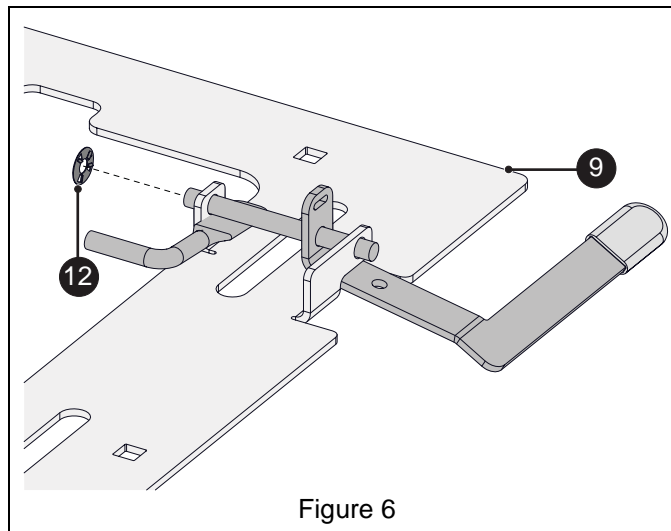
See Figure 5

10. Disconnect and retain extension spring.
11. Remove and discard push nut retaining seat latch assembly.
12. Remove and retain extension spring and seat latch assembly. Discard seat plate.



## INSTALLATION

1. Position seat latch assembly on seat mount plate (item 9) and retain with 5/16" push nut (item 12). See Figure 6.



## Models Without Rollover Protection System (ROPS):

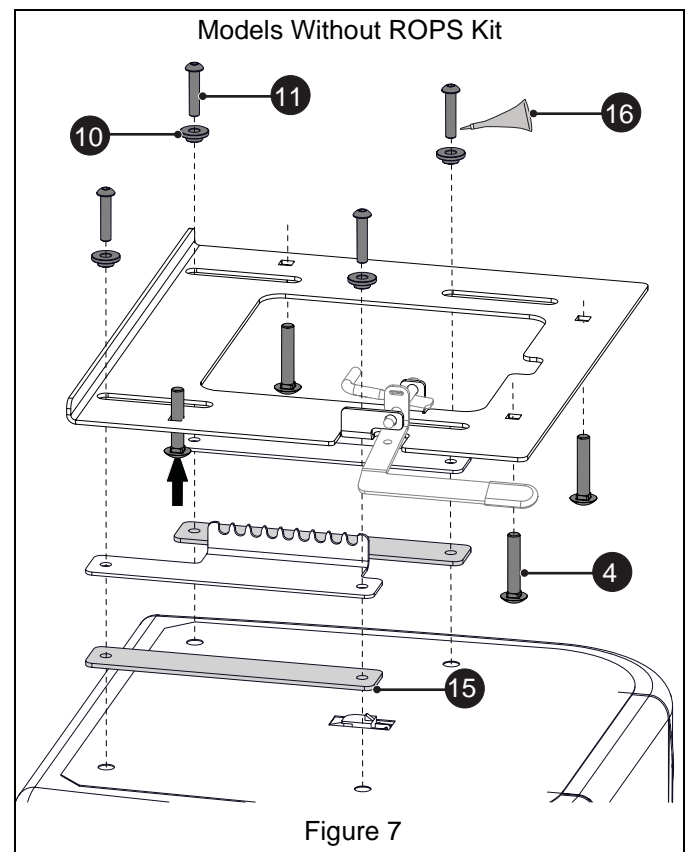
If ROPS kit is installed, skip to step 8.

See Figure 7.

2. Insert four 3/8" x 2" round head square neck bolts (item 4) loosely into seat plate assembly.

**IMPORTANT:** The round head square neck bolts **MUST** be installed at this time or disassembly will be necessary to install them.

3. Position two seat spacers (item 15) on seat bottom, followed by the slide and adjuster plates removed earlier.
4. Position the seat mount plate assembly on the spacers and plates.
5. Apply a generous amount of thread locking compound (item 16) on the threads of four 5/16" x 1 1/2" button socket-head cap screws (item 11).
6. Position four flange bushings (item 10) on seat mount plate and retain all parts with cap screws. Tighten cap screws.
7. Skip to step 15.



**Models With Rollover Protection System (ROPS):**

See Figure 8.

8. Insert four 3/8" x 2" round head square neck bolts (item 4) loosely into seat plate assembly.

**IMPORTANT:** The round head square neck bolts MUST be installed at this time or disassembly will be necessary to install them.

9. Position seat belt assembly at rear of seat bottom.  
10. Position two 1/4" x 1" flat steel washers removed earlier at front of seat bottom.  
11. Position two seat spacers (item 15) on top of seat belt bracket and washers, followed by the slide and adjuster plates removed earlier.  
12. Position the seat mount plate assembly on the seat.  
13. Apply a generous amount of thread locking compound (item 16) on the threads of four 5/16" x 1 1/2" button socket-head cap screws (item 11).  
14. Position four flange bushings (item 10) and four 7/8" flat washers removed earlier on seat mount plate and retain all parts with cap screws. Tighten cap screws.

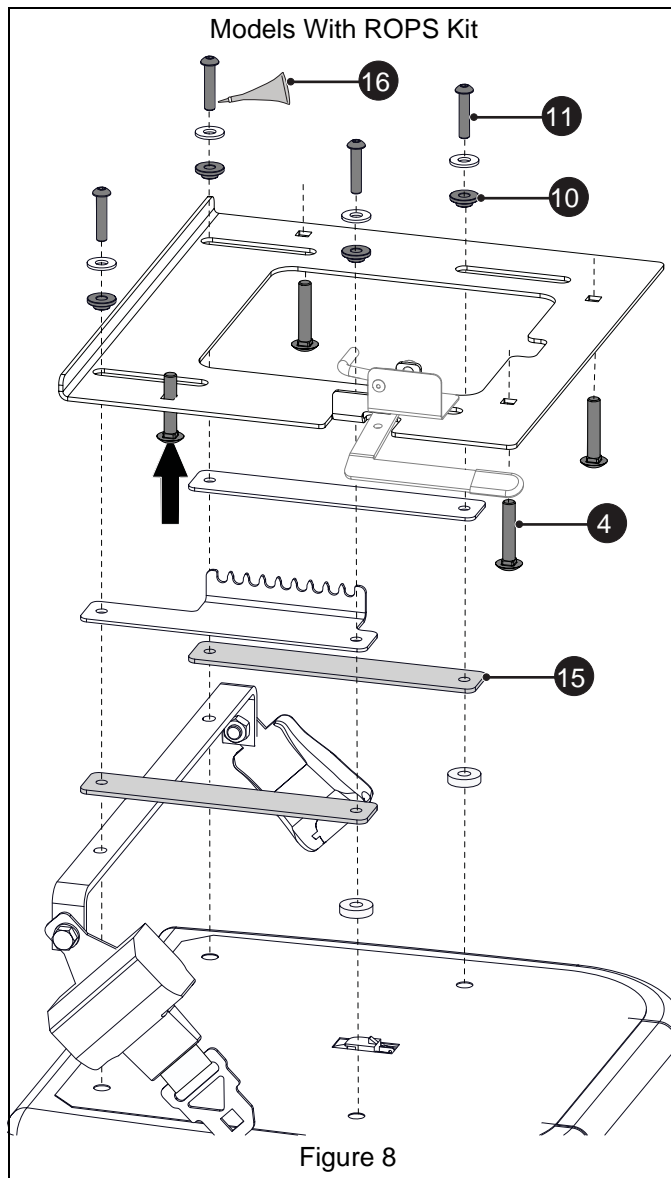


Figure 8

15. Position isolation mount plate assembly (item 2) on four round head square neck bolts and seat mount plate assembly.  
16. Install four 1/4" x 2" flat steel washers (item 5) on round head square neck bolts and retain with four 3/8" locking center flange nuts (item 6). Tighten nuts until rubber mounts just begin to bulge and then loosen slightly. Ensure that there at least three bolt threads visible beyond the nuts. See Figure 9.

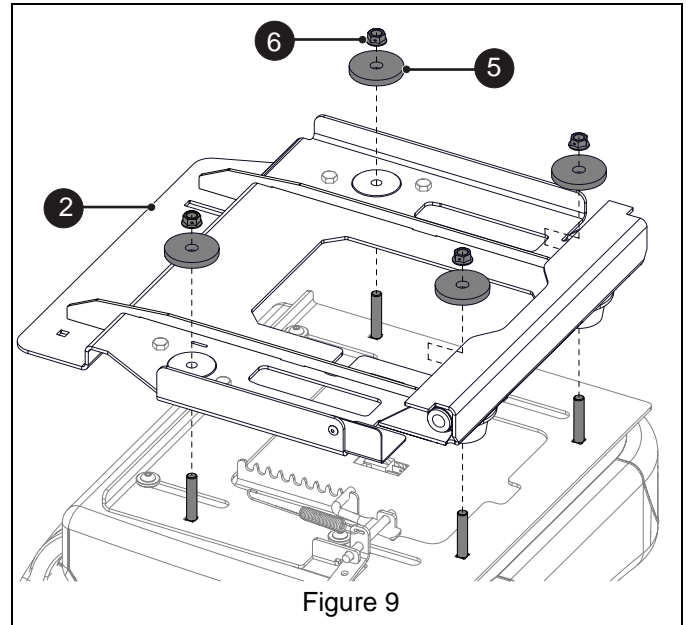


Figure 9

17. Install extension spring and connect to seat latch and slot in isolator mount seat plate. See Figure 10.

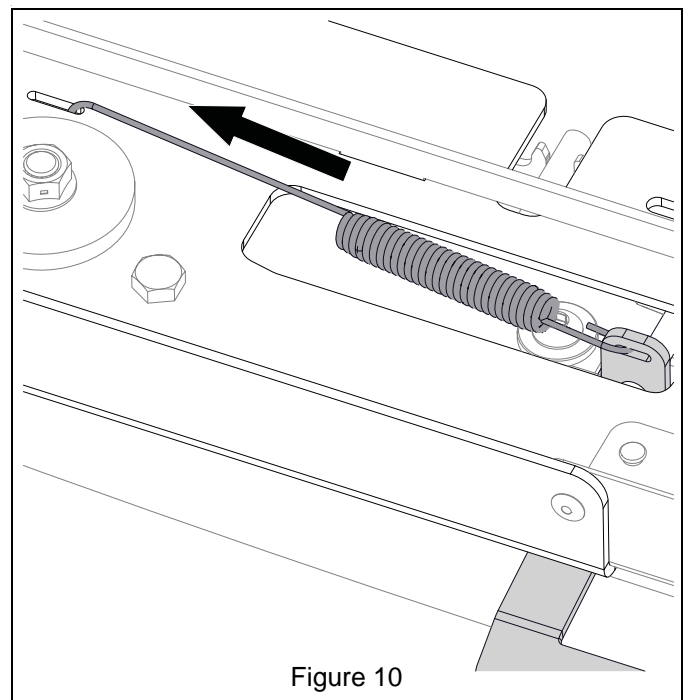


Figure 10

18. Install seat assembly and retain with one or two pivot rod(s), washer(s) and C-clip(s). See Figure 2.  
19. Securely reconnect seat switch.